

## Weighing modules

### Features

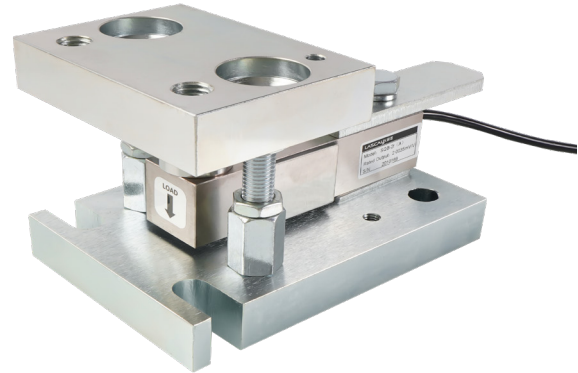
- Range: 0.5t...5t
- Unique structure, can be easily installed on various tanks
- Can eliminate weighing errors caused by thermal expansion and contraction of tanks
- Support bolts to prevent equipment from tipping over
- Alloy steel material, stainless steel optional
- Simple and fast installation
- Easy maintenance, saving downtime maintenance time
- Protection level IP67/IP68

### Applications

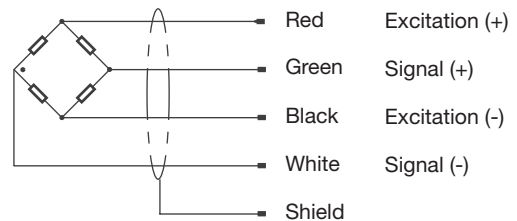
- Hopper, silo
- Platform, vertical tank
- Applicable to harsh environments such as conveyor roller scales
- Weighing and process weighing control in impact situations

### Description

The WM202 static load weighing module uses the SQB cantilever beam sensor, with a range of 0.5t to 5t. It is characterized by a compact structure and does not require the installation of other accessories. The self-stabilizing sensor pressure head makes the measurement accurate and repeatable. Made of alloy steel, it is suitable for weighing and controlling the batching process of tanks in harsh environments. It is easy to install and saves installation and downtime maintenance time. The static load weighing module can be easily installed on containers of various shapes and is suitable for weighing and controlling the batching process of tanks.



### Wiring



Specification		
Sensor	SQB	
Rated load	0.5,1,2,3,5	t
Rated output	2±0.0050	mV/V
Safety overload	150	%R.O.
Ultimate overload	300	%R.O.
Protection level	IP67/IP68	

Product specifications are subject to change without notice.

**WM202 Weighing modules**

