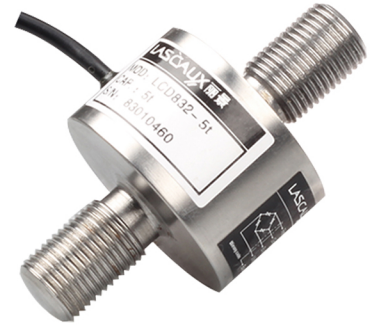


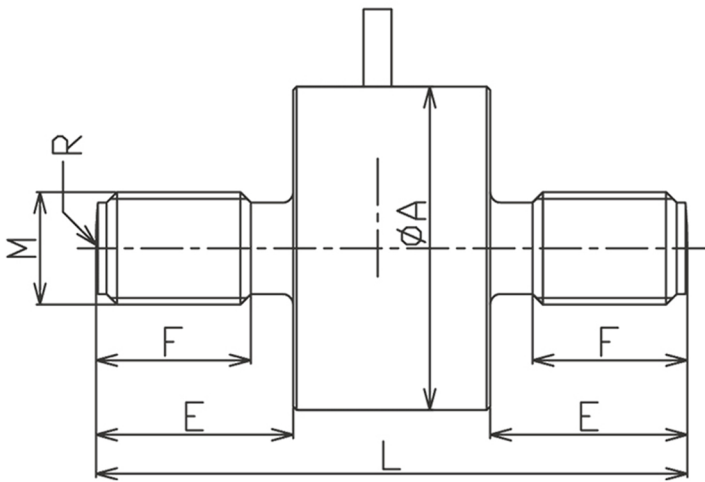
# LCD832 Load Cell

## Low Profile Disk Load Cell

- Maximum capacity (E<sub>max</sub>) (kg):  
5, 10, 20, 50, 100, 200, 500, 1000, 2000, 5000
- Be suitable for a wide range of applications including testing or weighing systems, material testing machines, Dynamometers and so on.

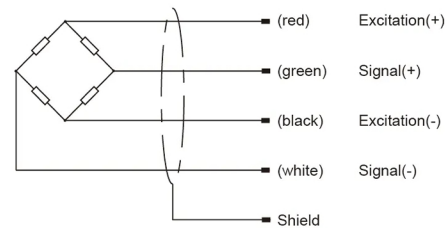


### Dimensions(mm)



量程 Capacity(kg)	ØA	L	E	F	R	F
5,10,20	26	42	12	9	30	M6
50,100	26	44	13	10	30	M8
200,500,1000	28	60	21	16	50	M10
2000,5000	46	84	28	22	80	M16*1.5

### Wiring code



### Specifications

Rated Load	kg	5, 10, 20, 50, 100, 200, 500
	t	1, 2, 5
Rated Output	mV/V	1.0
Zero Balance	%R.O.	±1
Comprehensive Error	%R.O.	±0.3
Creep after 30 minutes	%R.O.	±0.1
Recommend edexcitation voltage	VDC	5-12 /15(max)
Input impedance	Ω	350±5
Output impedance	Ω	350±3
Output impedance	MΩ	≥5000 (50VDC)
Safe overload	%R.C.	150
Ultimate overload	%R.C.	300
Material		Aluinium (5-20kg) / Stainless Steel (50-5000kg)
Degree of protection		IP65/IP67
Wiring code	Ex:	Red: +    Black: -
	Sig:	Green: +    White: -