

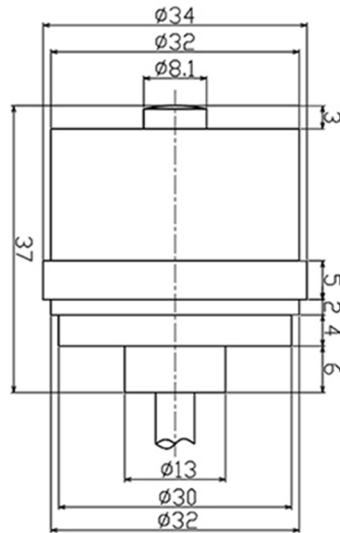
LCD806 Load Cell

Low Profile Disk Load Cell

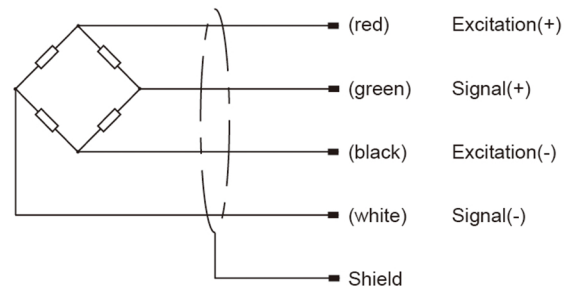
- Maximum capacity (E_{max}) (t):
0.5, 1, 2, 3
- Be suitable for a wide range of applications including testing or weighing systems.



Dimensions(mm)



Wiring code



Specifications

Rated Load	t	0.5, 1, 2, 3
Rated Output	mV/V	1
Zero Balance	%R.O.	±1.0
Comprehensive Error	%R.O.	±0.3
Creep after 30 minutes	%R.O.	±0.1
Recommended excitation voltage	VDC	5-12 /15(max)
Input impedance	Ω	350±5
Output impedance	Ω	350±3
Insulation resistance	M Ω	≥5000 (50VDC)
Safe overload	%R.C.	150
Ultimate overload	%R.C.	300
Material		Stainless Steel
Degree of protection		IP68