

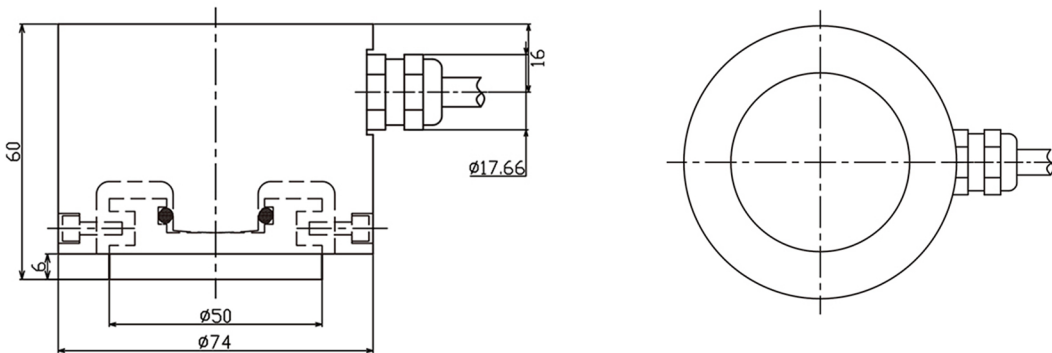
# LCD800 Load Cell

## Low Profile Disk Load Cell

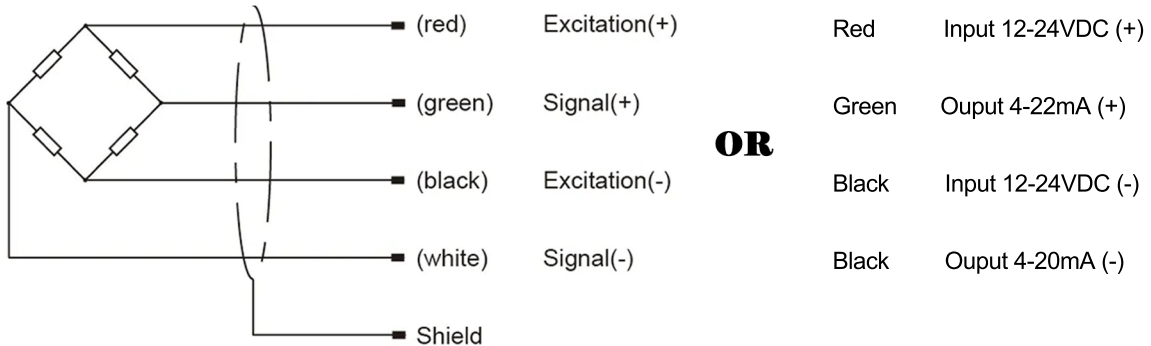
- Maximum capacity (E<sub>max</sub>) (t):  
0.1, 0.3, 0.6, 1.2, 2, 5
- Be suitable for the fields of Level control for liquid and bulk materials.



### Dimensions(mm)



### Wiring code



### Specifications

Rated Load	kg	100, 300, 600
	t	1.2, 2, 5
Rated Output	mA	4-20
Zero Balance	%R.O.	±1
Comprehensive Error	%R.O.	±0.3
Creep after 30 minutes	%R.O.	±0.05
Recommend edexcitation voltage	VDC	5-12 /15(max)
Output impedance	MΩ	≥5000 (50VDC)
Safe overload	%R.C.	150
Ultimate overload	%R.C.	300
Material		Alloy Steel/Stainless Steel
Degree of protection		IP67/IP68