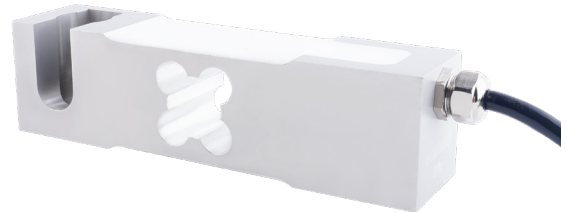


Aluminum alloy single point load cell

Features

- Range: 60kg...300kg
- High overall accuracy, good long-term stability
- Simple structure, easy to install
- Recommended table size: 400*400mm
- Aluminum alloy, anodized surface
- Corner deviation adjusted
- Optional
 - Explosion-proof model optional

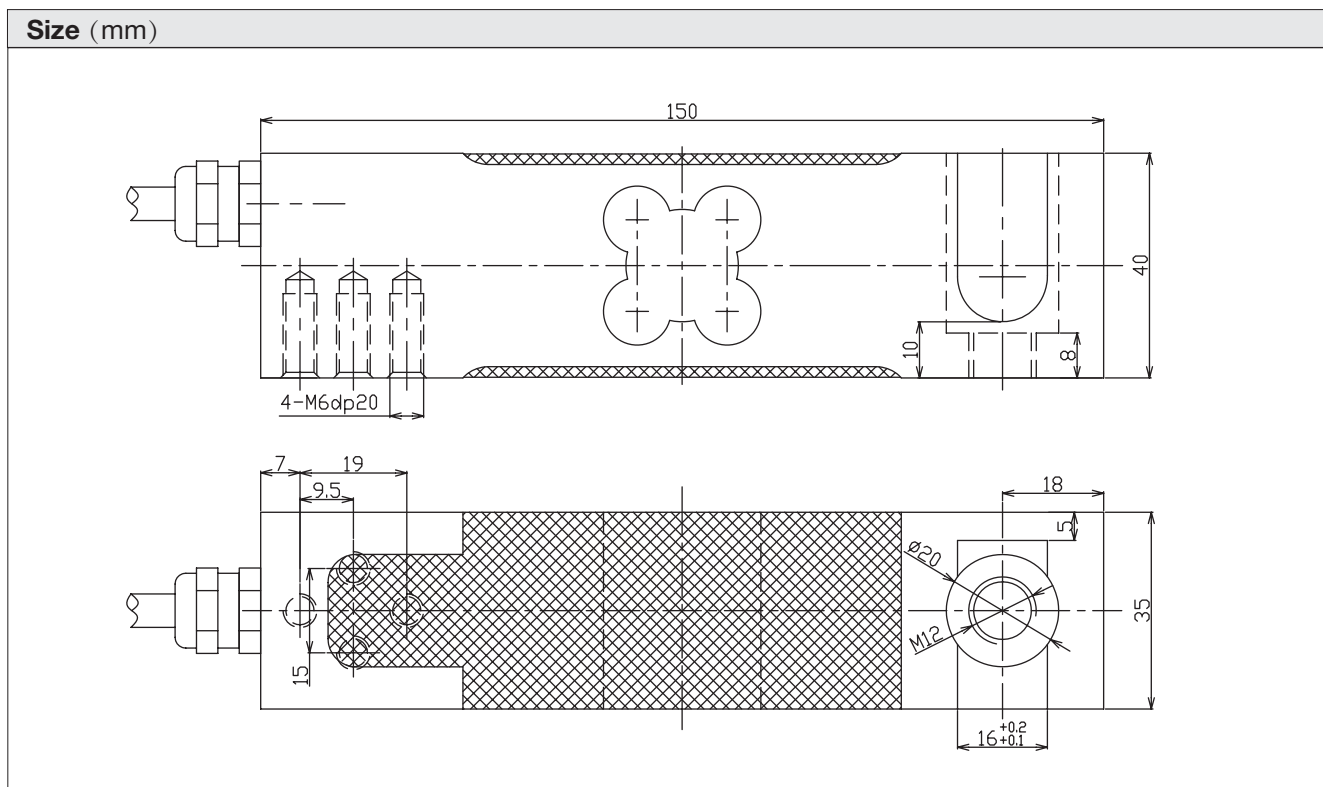


Application

- Belt scale, sorting machine
- Packaging scale, platform scale
- Batching scale, hopper scale
- Industrial weighing and production process weighing

Description

LC1535 sensor is a high-precision medium-range single-point sensor made of aluminum alloy, anodized surface, good bending and torsion resistance, protection level IP65, suitable for belt scales, small hopper scales, packaging scales, sorting scales, platform scales and other industrial weighing systems.



LC1535DE single point load cell

Product specifications		
Specification	Value	Unit
Rated load	60, 100, 150, 200, 250, 300	kg
Rated output	2.0±0.2	mV/V
Zero balance	±1	%R.O.
Comprehensive Error	±0.02	%R.O.
Zero output	≤±5	%R.O.
Repeatability	≤±0.02	%R.O.
Creep (30 minutes)	≤±0.02	%R.O.
Normal operating temperature range	-10~+40	°C
Allowable operating temperature range	-20~+70	°C
Effect of temperature on sensitivity	≤±0.02	%R.O./10°C
Effect of temperature on zero point	≤±0.02	%R.O./10°C
Recommended excitation voltage	5-12	VDC
Input impedance	410±10	Ω
Output impedance	350±5	Ω
Insulation Resistance	≥5000 (50VDC)	MΩ
Safe overload	150	%R.C.
limited overload	200	%R.C.
Material	Aluminum	
Protection Class	IP65	
Cable length	2	m
Platform size	400*400	mm
Tightening torque	10	N•m

Product specifications are subject to change without notice.

Wiring

