

Aluminum alloy single point load cell

Features

- Weighing range: 30kg...300kg
- High overall accuracy, good long-term stability
- Simple structure, easy to install
- Recommended table size: 450*500mm
- Aluminum alloy material, anodized surface
- Corner deviation has been adjusted
- Optional
 - Explosion-proof model is available

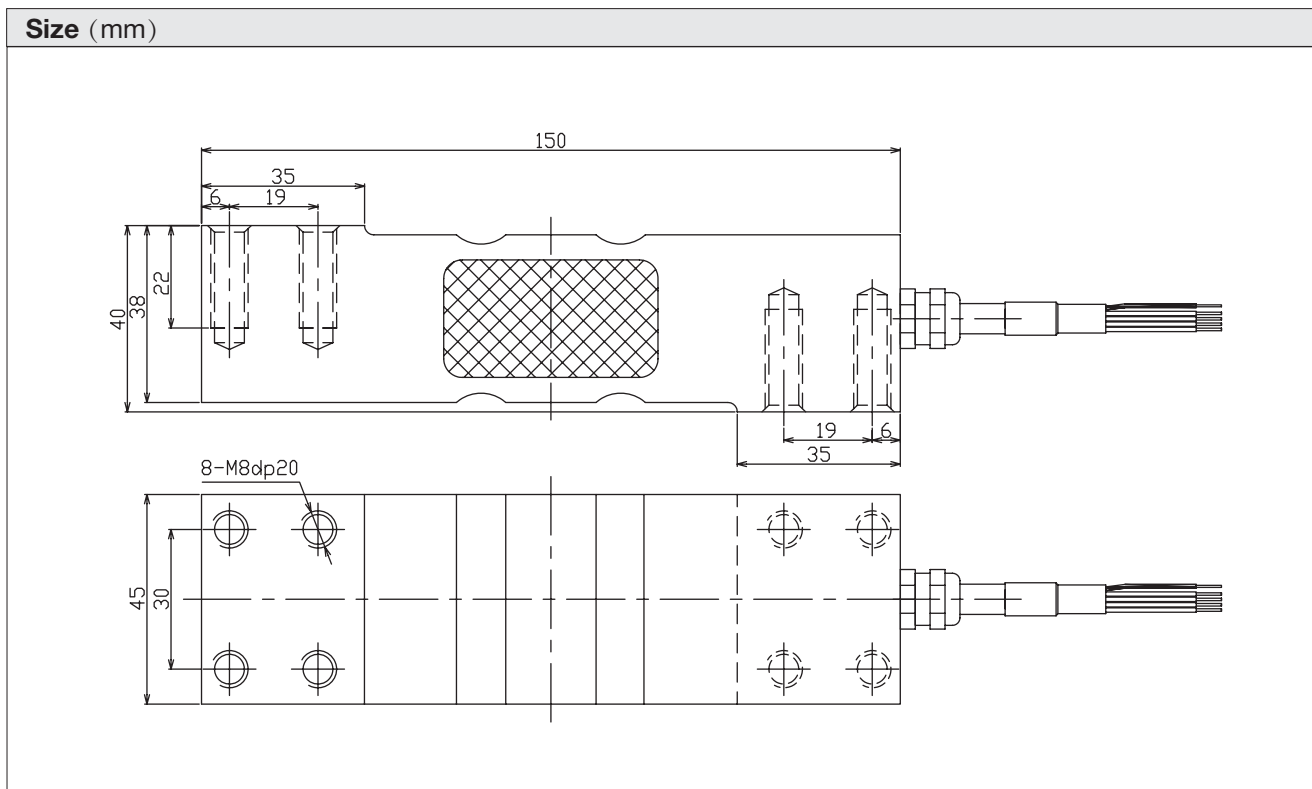


Application

- Belt scale, sorting machine
- Packaging scale, platform scale
- Batching scale, hopper scale
- Complex working environment

Description

The LC1545BS sensor is a high-precision medium-range single-point sensor. It adopts a unique side sealing process to effectively protect the strain gauge and cable. The protection level reaches IP67. It is sturdy and durable, which significantly extends the service life of the sensor. This makes it an ideal choice for weighing and force measurement applications under various complex working conditions.

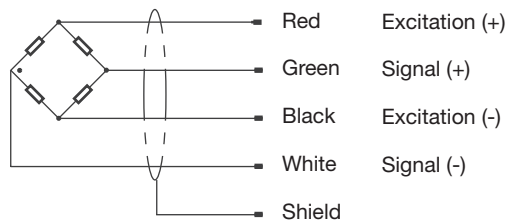


LC1545BS single point load cell

Product specifications		
Specification	Value	Unit
Rated load	30,60,100,150,200,300	kg
Rated output	2.0±0.2	mV/V
Zero balance	±1	%R.O.
Comprehensive Error	±0.02	%R.O.
Zero output	≤±5	%R.O.
Repeatability	≤±0.02	%R.O.
Creep (30 minutes)	≤±0.02	%R.O.
Normal operating temperature range	-10~+40	°C
Allowable operating temperature range	-20~+70	°C
Effect of temperature on sensitivity	±0.02	%R.O./10°C
Effect of temperature on zero point	±0.02	%R.O./10°C
Recommended excitation voltage	5-12	VDC
Input impedance	410±10	Ω
Output impedance	350±5	Ω
Insulation Resistance	≥5000 (50VDC)	MΩ
Safe overload	150	%R.C.
limited overload	200	%R.C.
Material	Aluminum	
Protection Class	IP67	
Cable length	2	m
Platform size	450*500	mm
Tightening torque		N•m

Product specifications are subject to change without notice.

Wiring



Aluminum alloy single point load cell

Features

- Weighing range: 5kg...50kg
- High overall accuracy, good long-term stability
- Simple structure, easy to install
- Recommended table size: 450*450mm
- Aluminum alloy material, anodized surface
- Corner deviation has been adjusted
- Optional

-Explosion-proof model is available

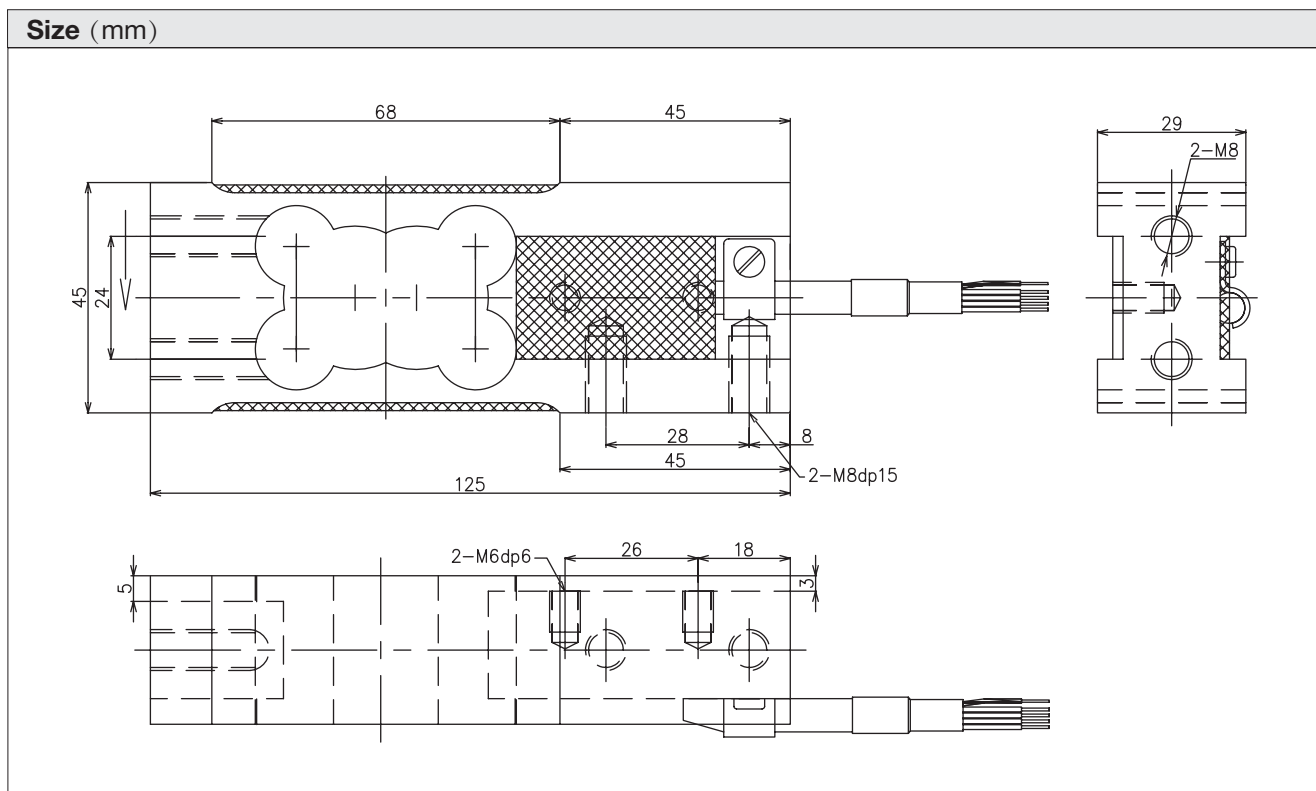


Application

- Packaging scales, platform scales
- Belt scales, sorting machines
- Batching scales, hopper scales
- Industrial weighing and production process weighing

Description

LC1245 sensor is a single-point weighing sensor specially developed for packaging scales. It combines high precision, high stability and durability, protection level IP65, and easy installation. It is suitable for all kinds of packaging machines, including food, medicine, chemical and other industries, and it can provide reliable weight detection data.



LC1245 single point load cell

Product specifications		
Specification	Value	Unit
Rated load	5, 8, 20, 50	kg
Rated output	2.0±0.2	mV/V
Zero balance	±1	%R.O.
Comprehensive Error	±0.02	%R.O.
Zero output	≤±5	%R.O.
Repeatability	≤±0.02	%R.O.
Creep (30 minutes)	≤±0.02	%R.O.
Normal operating temperature range	-10~+40	°C
Allowable operating temperature range	-20~+70	°C
Effect of temperature on sensitivity	±0.02	%R.O./10°C
Effect of temperature on zero point	±0.02	%R.O./10°C
Recommended excitation voltage	5-12	VDC
Input impedance	410±10	Ω
Output impedance	350±5	Ω
Insulation Resistance	≥5000 (50VDC)	MΩ
Safe overload	150	%R.C.
limited overload	200	%R.C.
Material	Aluminum	
Protection Class	IP65	
Cable length	2	m
Platform size	400*400	mm
Tightening torque	10	N•m

Product specifications are subject to change without notice.

Wiring

