

Aluminum alloy single point load cell

Features

- Capacity:5kg...50kg
- High comprehensive accuracy and good long-term stability
- Simple structure and easy installation
- Recommended platform size: 200*200mm
- Aluminum alloy material, surface anodized
- Corner deviation has been adjusted
- Optional
- - Explosion-proof

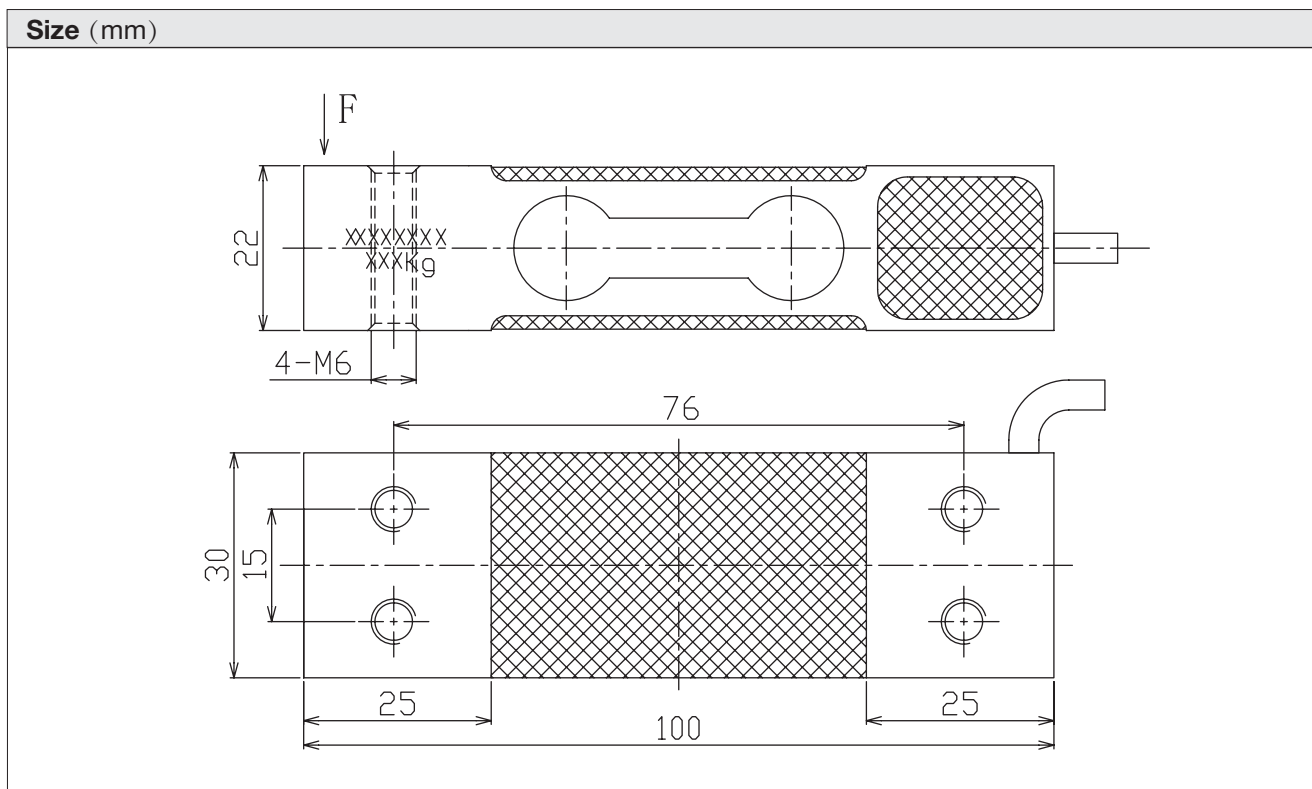


Application

- Electronic scale, counting scale
- Package scale, medical scale
- Industrial weighing and small platform scale

Description

LC1030 is an excellent low-capacity, high-precision single-type load cell, made of aluminum alloy, with strong stability and good bending and torsion resistance. The surface is anodized, is the best choice for mass production of weighing industry, bring higher efficiency and competitiveness



LC1030 single point load cell

| Product specifications | | |
|---------------------------------------|-------------------|------------|
| Specification | Value | Unit |
| Rated load | 5, 10, 20, 30, 50 | kg |
| Rated output | 2.0±0.2 | mV/V |
| Zero balance | ±1 | %R.O. |
| Comprehensive Error | ±0.02 | %R.O. |
| Zero output | ≤±1 | %R.O. |
| Repeatability | < ±0.02 | %R.O. |
| Creep (30 minutes) | < ±0.03 | %R.O. |
| Normal operating temperature range | -10~+40 | °C |
| Allowable operating temperature range | -20~+70 | °C |
| Effect of temperature on sensitivity | ±0.02 | %R.O./10°C |
| Effect of temperature on zero point | ±0.02 | %R.O./10°C |
| Recommended excitation voltage | 5-12 | VDC |
| Input impedance | 410±10 | Ω |
| Output impedance | 350±3 | Ω |
| Insulation Resistance | ≥3000 (50VDC) | MΩ |
| Safe overload | 150 | %R.C. |
| limited overload | 200 | %R.C. |
| Material | Aluminum | |
| Protection Class | IP65 | |
| Cable length | 0.4 | m |
| Platform size | 200•200 | mm |
| Tightening torque | 2 | N•m |

Product specifications are subject to change without notice.

Wiring

