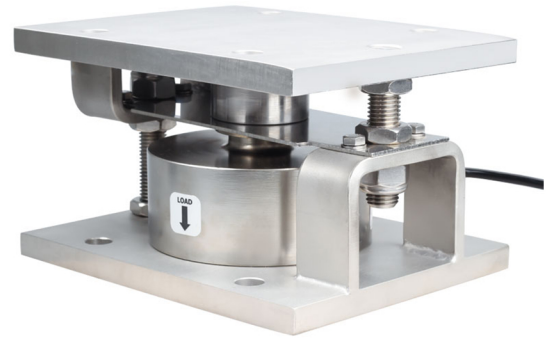


GL

Weighing Module

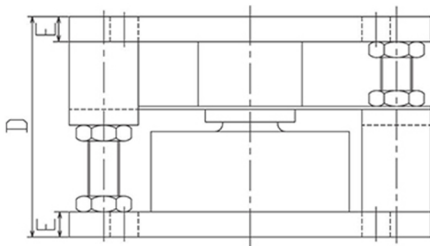
- Maximum capacity (Emax) (t):
10, 20, 30, 50
- Be suitable for tanks, silo, and others weighing control.



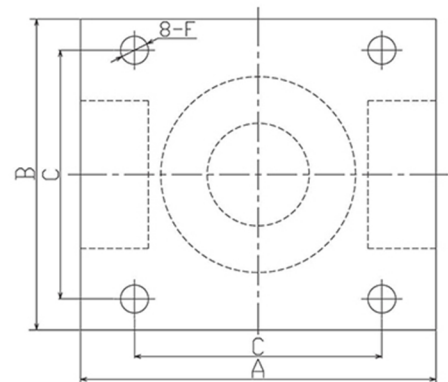
Features

- Unique structure, simplifies load cell installation on tanks, silo, and other weighing vessels
- Remove the weighing error thermal expansion, contraction
- Support the bolt, prevent the equipment to avoid upsetting
- Alloy steel, nickel plating; Stainless steel material is available
- Simple to install, express setup
- Reducing load cell damage and plant down-time
- Be suitable for tanks, silo, and others weighing control

Dimensions(mm)



Capacity(t)	Dimension	A	B	C	D	E	F
10, 20		200	160	120	120	14	Ø14
30		230	200	160	140	16	Ø18
50		320	320	250	160	19	Ø23



Specifications

Load Cell		LCD800/LCD800-SS
Rated Load	t	10, 20, 30, 50
Rated Output	mV/V	1.5±0.2
Safe overload	%R.C.	150
Ultimate overload	%R.C.	300
Protection class		IP67/IP68