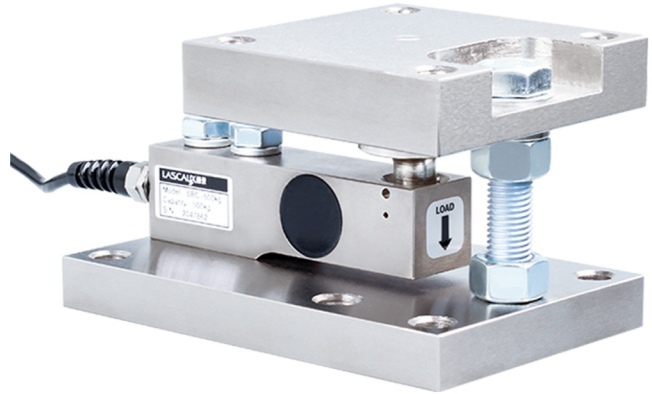


FWC

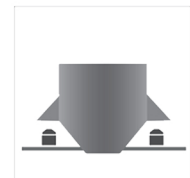
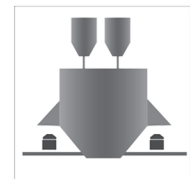
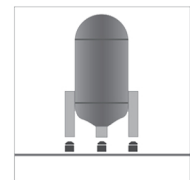
Weighing Module

- Maximum Capacity (E_{max}) (t):
0.5, 1, 2, 3, 5,
- Suitable for tanks, silo, and other weighing control.



Features

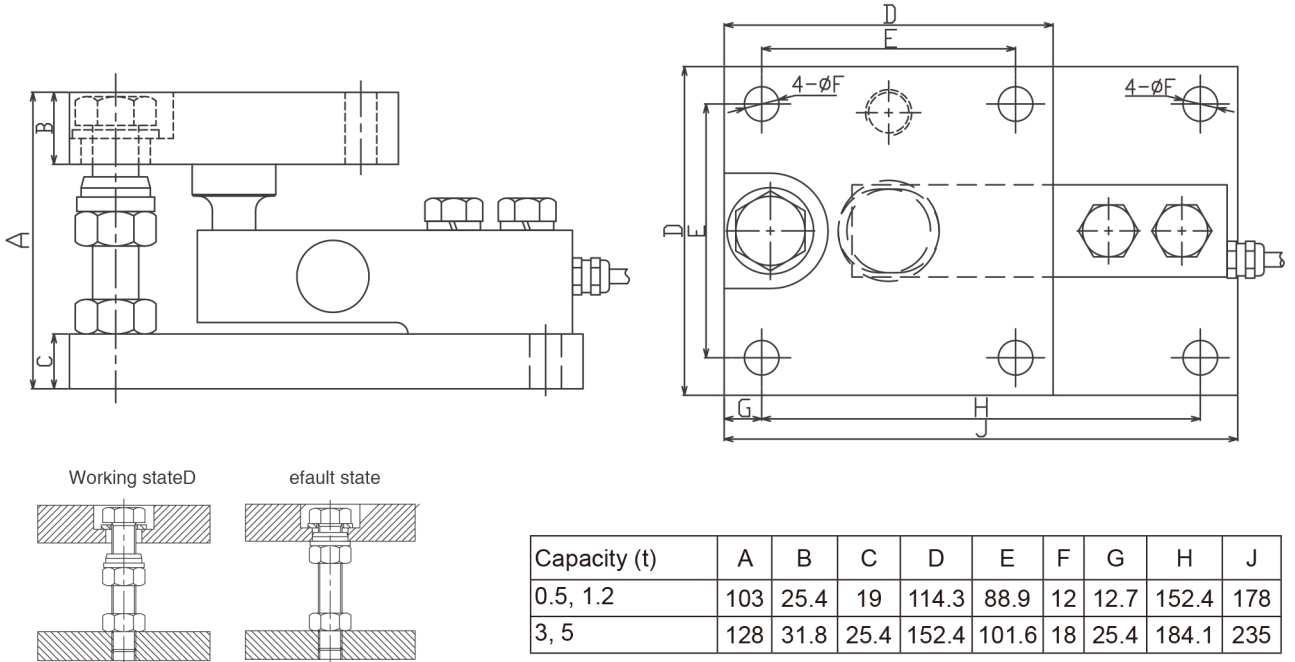
- Unique structure, simplifies load cell installation on tanks, silo, and other weighing vessels
- Alloy steel, nickel plating; Stainless steel material is available
Simple to install, express setup
- High accuracy load cell, High comprehensive precision
- Three different module types: Fixed, Semi-float, Full-float
- Remove the weighing error thermal expansion, contraction
- Support the bolt, prevent the equipment to avoid upsetting
- Reducing load cell damage and plant down-time
- Suitable for tanks, silo, and others weighing control



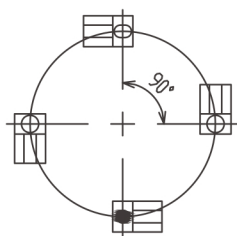
Specifications

Load Cell		SBC/SBC-SS
Rated Load	t	0.5, 1, 2, 3, 5
Rated Output	mV/V	2±0.005
Safe overload	%R.C.	150
Ultimate overload	%R.C.	300
Degree of protection		IP67/IP68
Wiring code	Ex:	Red: + Black: -
	Sig:	Green: + White: -

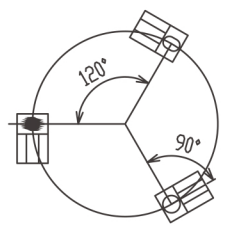
Dimensions (in mm)



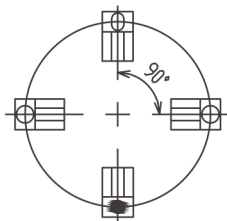
Installation



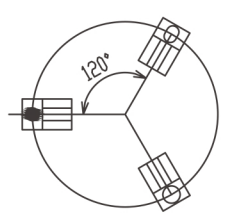
Tangential layout



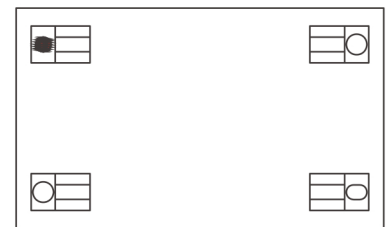
Tangential layout



Radial Layout



Radial Layout



Rectangular layout



Fixed



Float



Semi-float