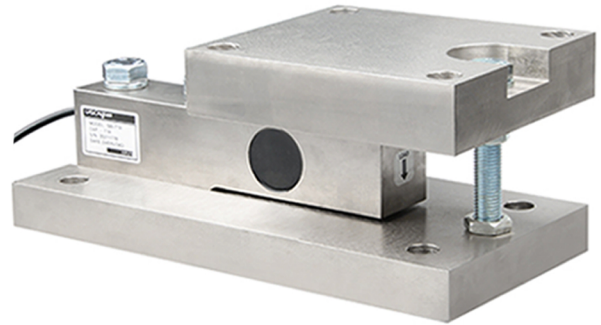


# FW

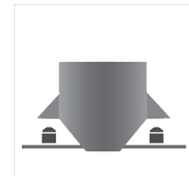
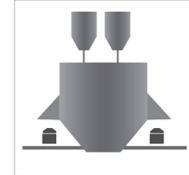
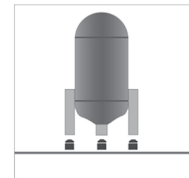
## Weighing Module

- Maximum Capacity (E<sub>max</sub>) (t):  
0.5, 1, 2, 3, 5, 7.5
- Suitable for tanks, silo, and other weighing control.



### Features

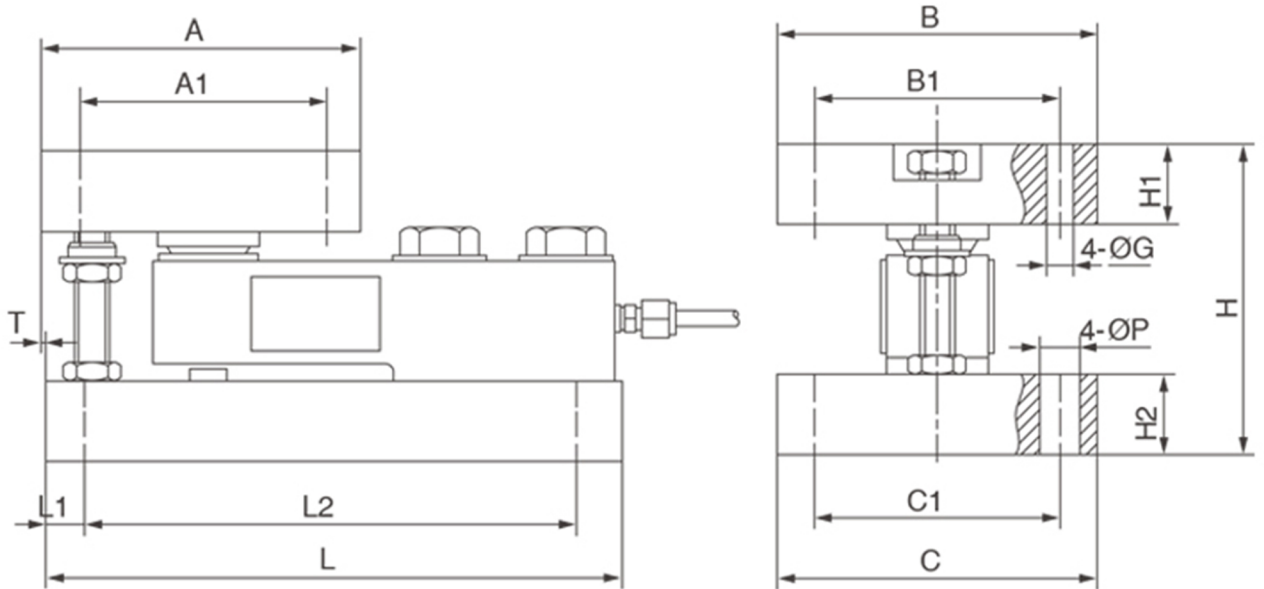
- Unique structure, simplifies load cell installation on tanks, silo, and other weighing vessels
- Alloy steel, nickel plating; Stainless steel material is available  
Simple to install, express setup
- High accuracy load cell, High comprehensive precision
- Three different module types: Fixed, Semi-float, Full-float
- Remove the weighing error thermal expansion, contraction
- Support the bolt, prevent the equipment to avoid upsetting
- Reducing load cell damage and plant down-time
- Suitable for tanks, silo, and others weighing control



### Specifications

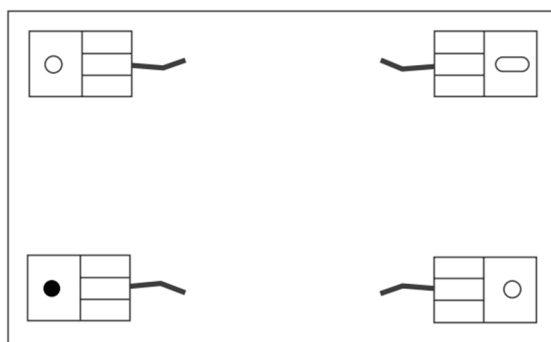
Load Cell		SB
Rated Load	t	0.5, 1, 2, 3, 5
Rated Output	mA	2±0.005
Safe overload	%R.C.	150
Ultimate overload	%R.C.	300
Degree of protection		IP67
Wiring code	Ex:	Red: +    Black: -
	Sig:	Green: +    White: -

## Dimensions (in mm)



量程 (t)	L	L1	L2	A	A1	B	B1	C	C1	H	H1	H2	ØG	ØP	T
0.5,1,2,3	286	32	226	150	124	128	102	112	80	102	28	23	11	13	3
5,7.5	317.5	32	257	178	146	152	120	152	102	130	38	30	17.5	17	0

## Installation



Rectangular layout



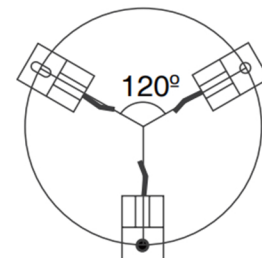
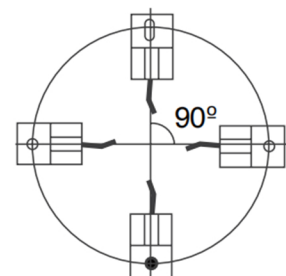
Fixed



Float



Semi-Float



Radial Layout