

Double ended shear beam load cells

Features

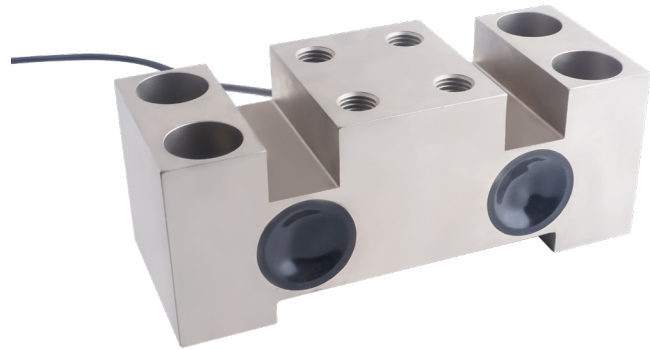
- Range: 10t...50t
- Double-ended center-loaded shear beam design
- Free horizontal displacement
- Insensitive to lateral loads
- Nickel-plated alloy steel surface

Applications

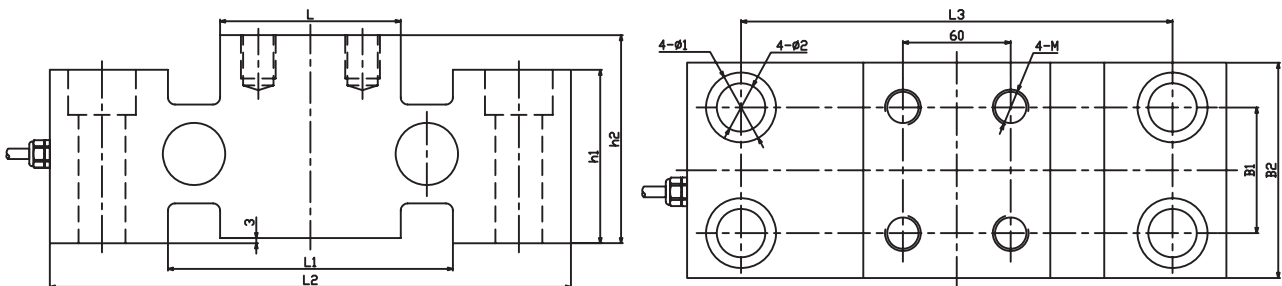
- Ladle scale

Description

The shear beam structure provides excellent performance for measuring larger loads. The DW10 product is made of alloy steel with a protection level of up to IP67, and it has good working performance even in a humid environment. DW10 is an ideal choice for ladle scale sensors.



Size (mm)



量程 (t)	L	L1	L2	L3	h1	h2	B1	B2	Ø1	Ø2	M
10	84	132	200	170	50	60	50	80	Ø26dp16	18	M16dp20
20/30	104	164	300	240	100	120	70	120	Ø39dp28	27	M20dp25
50	104	164	300	240	100	120	80	150	Ø39dp28	27	M24dp30

DW10 load cell

Specification		
Rated load	10, 20, 30, 50	t
Sensitivity	1.3±0.0050	mV/V
Zero output	±0.02	%R.O.
Nonlinearity	±0.1	%R.O.
Creep (30 minutes)	±0.05	%R.O.
Repeatability	±0.03	%R.O.
Normal operating temperature range	-10~+40	°C
Allowable operating temperature range	-20~+70	°C
Effect of temperature on sensitivity	±0.1	%R.O./10°C
Effect of temperature on zero	±0.1	%R.O./10°C
Recommended excitation voltage	5-12	VDC
Input impedance	380±10	Ω
Output impedance	350±5	Ω
Insulation impedance	≥5000 (50VDC)	MΩ
Safe overload	150	%R.C.
Ultimate overload	300	%R.C.
Elastic element material	Nickel-plated alloy steel	
Protection level	IP67	
Cable length	8/13	m

Product specifications are subject to change without notice.

Wiring

