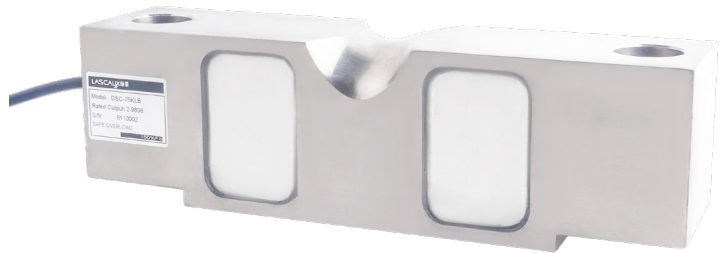


Double ended shear beam load cells

Features

- Range: 20k...125k lbs
- Double-ended center-loaded shear beam design
- Free horizontal displacement
- Insensitive to lateral loads
- Nickel-plated alloy steel surface



Applications

- Truck scale/railway scale/ground scale
- Hopper/silo/tank scale

Description

In some application cases such as hopper and tank weighing, the double-ended fixed installation method of DSC products provides good constraints and the displacement suppression rod can be omitted. The shear beam design provides excellent measurement performance for high-capacity loads. DSC is designed for the combination of multiple weighing sensors, such as medium and high-capacity tanks, silos and hopper weighing applications. DSC is made of nickel-plated alloy steel with an IP65 protection level and a certain degree of waterproofing. It is also available in a stainless steel fully welded sealed version. It is an ideal choice for truck scales/railway scales, container weighing and batching systems.

Size (mm)											
量程 (klbs)		L	L1	L2	W	H	H1	H2	D	R	R1
20/25	mm	196.9	126.7	165.1	42.9	49.3	43.2	41.4	17.3	22.9	19.1
	inch	7.75	4.99	6.50	1.69	1.94	1.70	1.63	0.68	0.90	0.75
40	mm	260.4	162.3	215.9	62.0	62.0	53.3	50.8	20.6	28.5	25.4
	inch	10.25	6.39	8.50	1.94	2.44	2.10	2.00	0.81	1.12	1.00
50/60/75	mm	260.4	162.4	215.9	62.0	74.7	67.3	64.5	26.9	34.8	25.4
	inch	10.25	6.39	8.50	2.44	2.94	2.65	2.54	1.06	1.37	1.00
100/125	mm	387.4	228.4	323.9	73.7	98.0	87.1	83.8	41.2	45.7	38.1
	inch	15.25	8.99	12.75	2.90	3.86	3.43	3.30	1.62	1.80	1.50

DSC load cell

Specification		
Rated load	20k,25k,40k,50k,60k,75k,100k,125k	lbs
Sensitivity	3±0.0075	mV/V
Zero output	±0.02	%R.O.
Nonlinearity	±0.025	%R.O.
Creep (30 minutes)	±0.03	%R.O.
Repeatability	±0.02	%R.O.
Normal operating temperature range	-10~+40	°C
Allowable operating temperature range	-20~+70	°C
Effect of temperature on sensitivity	±0.02	%R.O./10°C
Effect of temperature on zero	±0.02	%R.O./10°C
Recommended excitation voltage	5-12	VDC
Input impedance	760±10	Ω
Output impedance	700±5	Ω
Insulation impedance	≥5000 (50VDC)	MΩ
Safe overload	150	%R.C.
Ultimate overload	300	%R.C.
Elastic element material	Nickel-plated alloy steel	
Protection level	IP67	
Cable length	8/13	m

Product specifications are subject to change without notice.

Wiring

