

# CM Load Cell

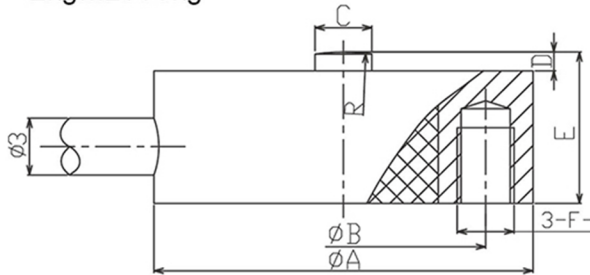
## Miniature Force Transducer

- Maximum capacity (E<sub>max</sub>) (kg):  
2, 5, 10, 20, 50, 100, 200, 500, 1000
- Be suitable for a wide range of applications including testing or weighing systems, and it can be put into the device, in order to monitor the force.

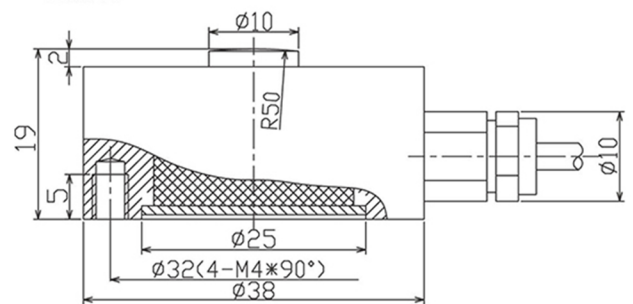


### Dimensions(mm)

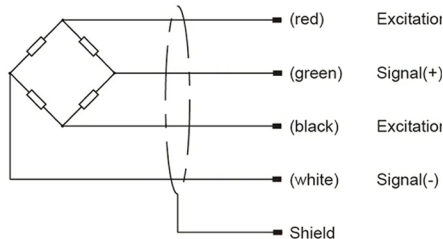
2kg...2000kg



3t...5t



Wiring code



量程 Capacity(kg)	ØA	ØB	ØC	D	E	R	F
2-20	20	15	Ø3	1	8	10	M3dp4
50-200	20	15	Ø3	1	9	15	M3dp4
500-2000	25.4	18	Ø5	2	13	25	M3dp5

### Specifications

Rated Load	kg	2,5,10,50,100,200,500
	t	1,2,3,5
Rated Output	mV/V	1~1.5±0.20
Zero Balance	%R.O.	±2
Comprehensive Error	%R.O.	±0.3
Creep after 30 minutes	%R.O.	±0.05
Recommend edexcitation voltage	VDC	10 /15(max)
Input impedance	Ω	350±5
Output impedance	Ω	350±3
Output impedance	MΩ	≥5000 (50VDC)
Safe overload	%R.C.	150
Ultimate overload	%R.C.	200
Material		Aluminum/Stainless Steel
Degree of protection		IP65/IP66