

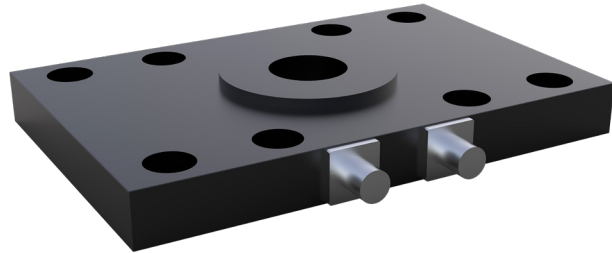
On-board weighing load cell

Features

- Real-time weighing, accurate reporting
- Stainless steel welding and sealing process
- Stable and reliable, protection level IP67
- Customizable according to vehicle model

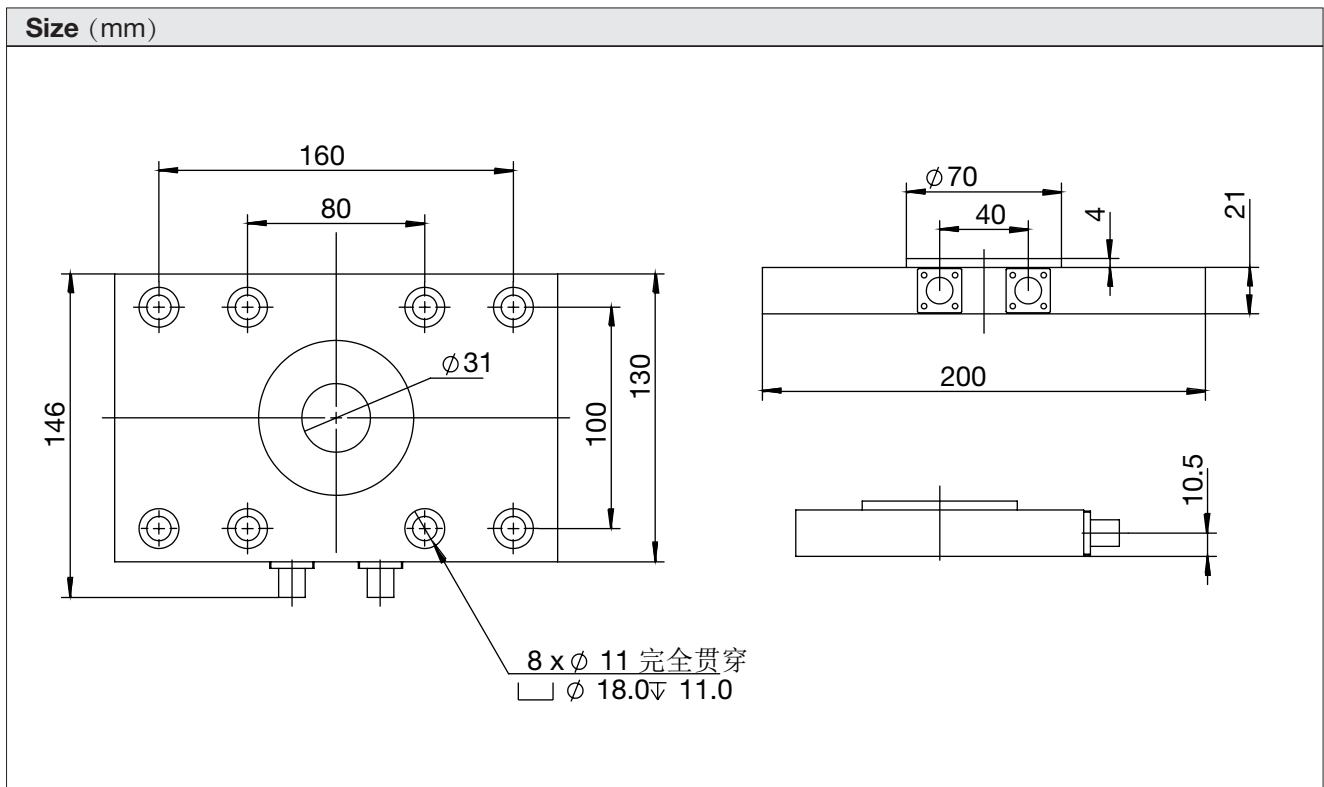
Applications

- Applicable to vehicle weighing
- Trucks
- Logistics vehicles
- Coal trucks
- Muck trucks



Description

The 8200 vehicle-mounted weighing sensor adopts a flat-plate structure design, which can provide a larger contact area, thereby improving measurement accuracy and stability. It can also evenly distribute the weight of the garbage truck and reduce local wear caused by concentrated loads. It can meet the requirements of high measurement accuracy, convenient modification, stability, reliability and durability. The flat-plate weighing sensor is a relatively excellent solution.



8200 On-board weighing load cell

Specification		
Rated load	16	T
Rated output	2	mV/V
Comprehensive error	±0.5	%F.S.
Repeatability	±0.3	%F.S.
Creep	±0.1	%F.S.
Zero output	±2	%F.S.
Excitation voltage	10	VDC
Protection level	IP67	
Insulation resistance	3000(50VDC)	MΩ
Safe overload	150	%F.S.
Ultimate overload	200	%F.S.
Temperature compensation range	-10~40	°C
Cable specifications	5	m

Product specifications are subject to change without notice.

Wiring

