

On-board weighing load cell

Features

- Simple structure, easy to install
- Real-time weighing, abnormal alarm
- Stable and reliable, protection level IP67
- Can be customized according to vehicle model

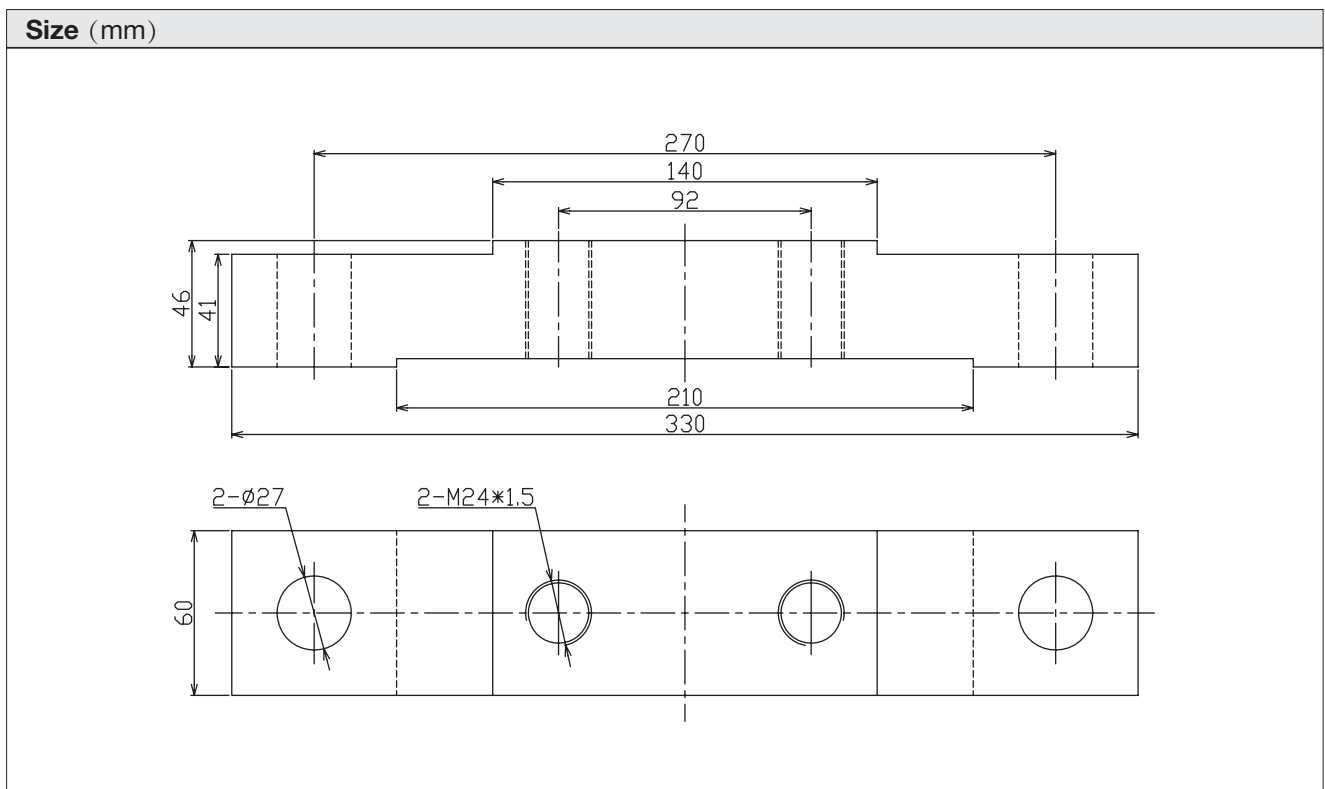
Applications

- Smart logistics
- Intelligent sanitation
- Scientific overload control
- Cement flow control
- Medical waste supervision
- Various types of vehicles that need to be weighed
- Overload and unbalanced load detection
- Cargo flow control



Description

607 series weighing sensor products are widely used in various vehicle models such as cement trucks, tank trucks, coal trucks, trucks, etc. We can customize according to user installation requirements, vehicle models, communication requirements and other customer needs. Recommended number of installations: 4-6, engineers will select for you according to your vehicle model.



607A-10T On-board weighing load cell

Specification		
Rated load	30	t
Rated output	1	mV/V
Comprehensive error	±0.3	%R.O.
Creep (30 minutes)	±1	%R.O.
Repeatability	±0.1	%R.O.
Effect of temperature on sensitivity	±0.05	%R.O./10°C
Effect of temperature on zero point	±0.05	%R.O./10°C
Recommended excitation voltage	5-10	VDC
Input impedance	760±10	Ω
Output impedance	700±5	Ω
Insulation impedance	≥3000 (50VDC)	MΩ
Safe overload	200	%R.C.
Ultimate overload	300	%R.C.
Elastic element material	Alloy steel	
Protection level	IP66	
Cable length	10	m

Product specifications are subject to change without notice.

Wiring

