

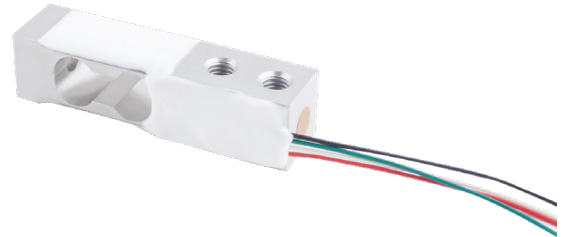
Aluminum alloy single point load cell

Features

- Weighing range: 1.5kg
- Compact size, stable performance
- Simple structure, easy to install
- Aluminum alloy material, anodized surface

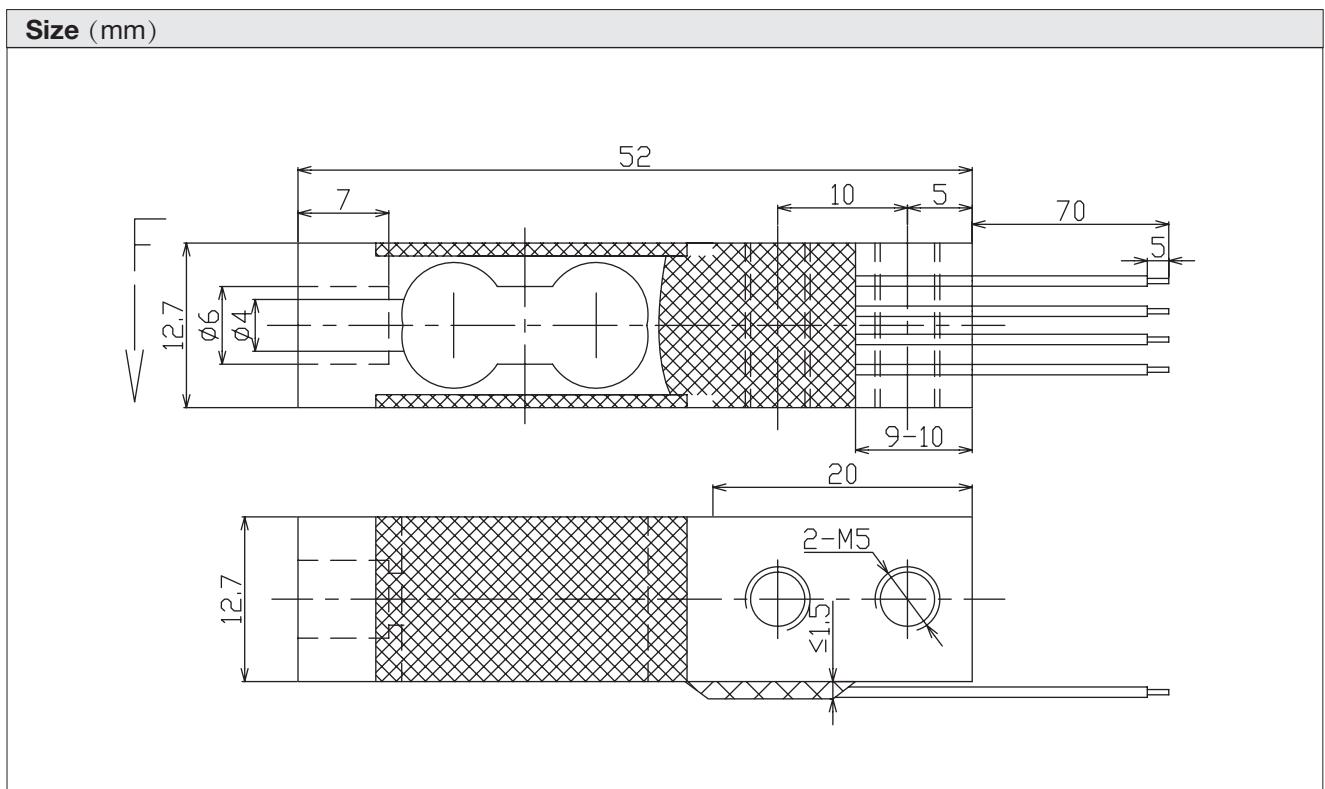
Application

- Kitchen scales, electronic scales, retail scales
- Packaging machines, filling machines, weaving machines



Description

106B is a small-range, compact single-point weighing sensor made of aluminum alloy, anodized surface, and IP65 protection grade. This sensor is suitable for electronic scales and small platform weighing applications.



106B single point load cell

Product specifications		
Specification	Value	Unit
Rated load	1.5	kg
Rated output	1	mV/V
Comprehensive Error	±0.05	%R.O.
Zero output	≤0.1	%R.O.
Repeatability	≤±0.03	%R.O.
Creep (after 30 minutes)	≤±0.05	%R.O.
Normal operating temperature range	-10~+40	°C
Allowable operating temperature range	-20~+70	°C
Effect of temperature on zero point	≤0.1	%R.O./10°C
Effect of temperature on sensitivity	±0.05	%R.O./10°C
Recommended excitation voltage	5-12	VDC
Input impedance	350±5	Ω
Output impedance	350±5	Ω
Insulation Resistance	≥3000 (50VDC)	MΩ
Safe overload	150	%R.C.
Limit overload	200	%R.C.
Material	Aluminum	
Protection Class	IP65	
Cable length	70	mm

Product specifications are subject to change without notice.

Wiring

